



## APPENDIX B

---

### 5. All-Hazard Survey Results

An online survey was posted as a mechanism for residents to provide input into the All-Hazard Mitigation Plan. We received 57 responses – 10 from the North Zone, 22 from the South Zone, 4 from the East Zone and 21 from the Central Zone. As part of this survey, two questions were asked that required residents to rank their responses from 1 to 5. The first question (question 4 of the survey), “How concerned are you about the following hazards?” had 5 possible responses:

- 5 = Very concerned
- 4 = Somewhat concerned
- 3 = No opinion
- 2 = Not very concerned
- 1 = Not at all concerned

The response total for each question was calculated and graphed by Zone and the KPB as a whole (by summing all of the zone responses).

The second question (question 6 of the survey), “In your opinion, what steps should the KPB take to reduce possible damage and loss of life from natural technological hazards?” also had 5 possible responses:

- 5 = Strongly agree
- 4 = Agree
- 3 = No opinion
- 2 = Disagree
- 1 = Strongly disagree

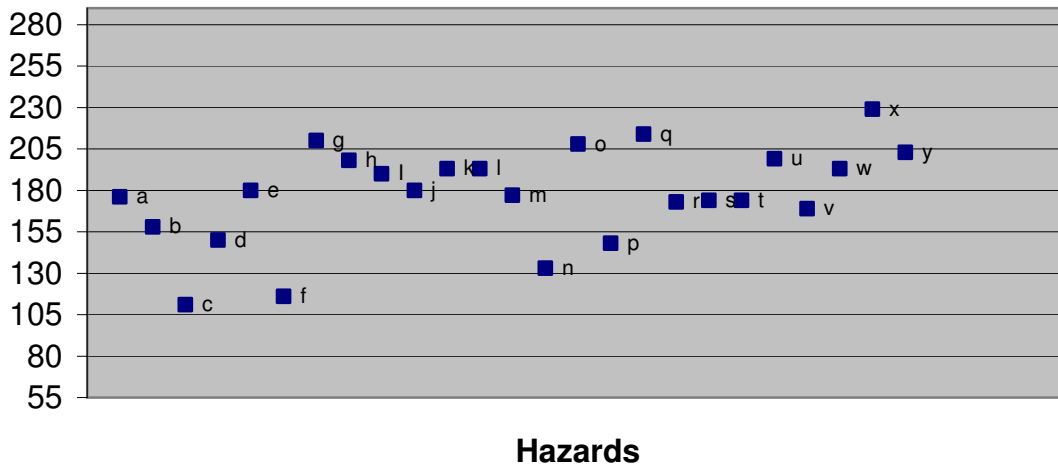
The response total for each question was calculated and graphed by Zone and the KPB as a whole (by summing all of the zone responses).



# APPENDIX B

**Response to survey question 4:  
How concerned are you about the following hazards?**

## KPB Resident Hazard Concerns (57 responses)



SCORES	
285	= Very concerned
228	= Somewhat concerned
171	= No opinion
114	= Not very concerned
57	= Not at all concerned

<b>a</b>	Air pollution
<b>b</b>	Attack
<b>c</b>	Avalanche
<b>d</b>	Civil Disturbance
<b>e</b>	Coastal Erosion
<b>f</b>	Dam Failure
<b>g</b>	Earthquake
<b>h</b>	Energy Emergency: Fuel/Resource Shortage
<b>i</b>	Fire: Explosion/Structural
<b>j</b>	Flood
<b>k</b>	Hazardous Materials: Accident
<b>l</b>	Hazardous Materials: Release
<b>m</b>	Infrastructure Failure

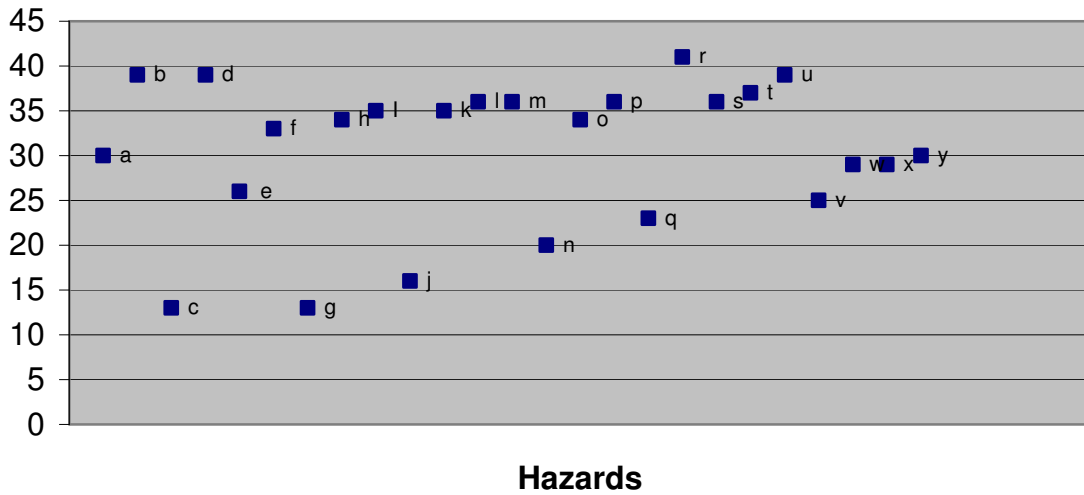
<b>n</b>	Landslide
<b>o</b>	Extended Power Outage
<b>p</b>	Radiation Release
<b>q</b>	Severe Wind Storm
<b>r</b>	Terrorism, WMD; Biological, Chemical, Nuclear
<b>s</b>	Transportation Accident: Aircraft
<b>t</b>	Transportation Accident: Marine
<b>u</b>	Transportation Accident: Motor Vehicle
<b>v</b>	Tsunami
<b>w</b>	Volcanic Ash Fall
<b>x</b>	Wildfire
<b>y</b>	Windstorm



# APPENDIX B

**Response to survey question 4:  
How concerned are you about the following hazards?**

## North Zone Residents Hazard Concerns (10 responses)



SCORES	
50	= Very concerned
40	= Somewhat concerned
30	= No opinion
20	= Not very concerned
10	= Not at all concerned

<b>a</b>	Air pollution
<b>b</b>	Attack
<b>c</b>	Avalanche
<b>d</b>	Civil Disturbance
<b>e</b>	Coastal Erosion
<b>f</b>	Dam Failure
<b>g</b>	Earthquake
<b>h</b>	Energy Emergency: Fuel/Resource Shortage
<b>i</b>	Fire: Explosion/Structural
<b>j</b>	Flood
<b>k</b>	Hazardous Materials: Accident
<b>l</b>	Hazardous Materials: Release
<b>m</b>	Infrastructure Failure

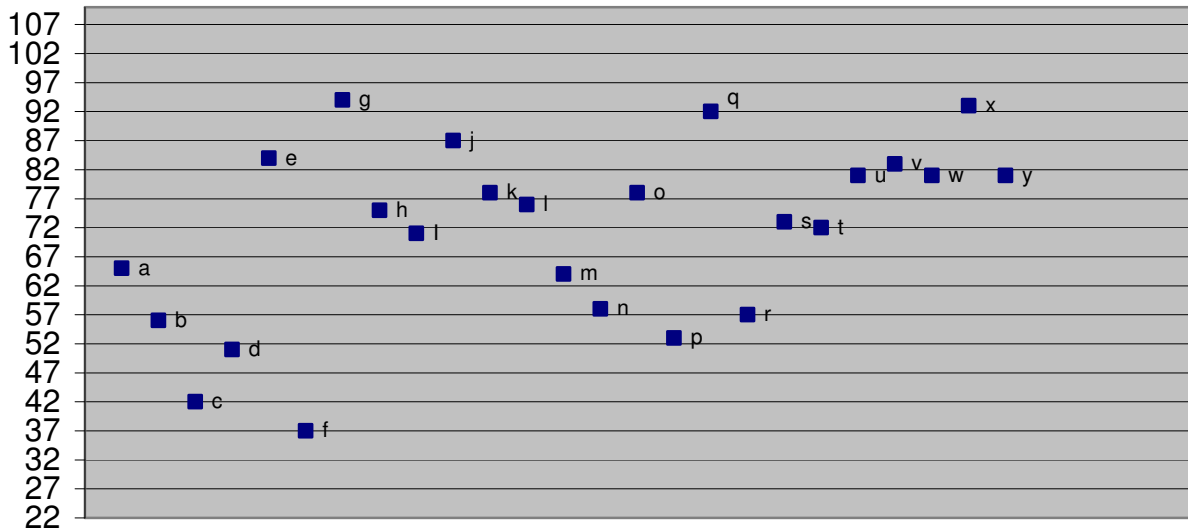
<b>n</b>	Landslide
<b>o</b>	Extended Power Outage
<b>p</b>	Radiation Release
<b>q</b>	Severe Wind Storm
<b>r</b>	Terrorism, WMD; Biological, Chemical, Nuclear
<b>s</b>	Transportation Accident: Aircraft
<b>t</b>	Transportation Accident: Marine
<b>u</b>	Transportation Accident: Motor Vehicle
<b>v</b>	Tsunami
<b>w</b>	Volcanic Ash Fall
<b>x</b>	Wildfire
<b>y</b>	Windstorm



# APPENDIX B

**Response to survey question 4:  
How concerned are you about the following hazards?**

## South Zone Residents Hazard Concerns (22 responses)



**Hazards**

### SCORES

- 110 = Very concerned
- 88 = Somewhat concerned
- 66 = No opinion
- 44 = Not very concerned
- 22 = Not at all concerned

- a** Air pollution
- b** Attack
- c** Avalanche
- d** Civil Disturbance
- e** Coastal Erosion
- f** Dam Failure
- g** Earthquake
- h** Energy Emergency: Fuel/Resource Shortage
- i** Fire: Explosion/Structural
- j** Flood
- k** Hazardous Materials: Accident
- l** Hazardous Materials: Release
- m** Infrastructure Failure

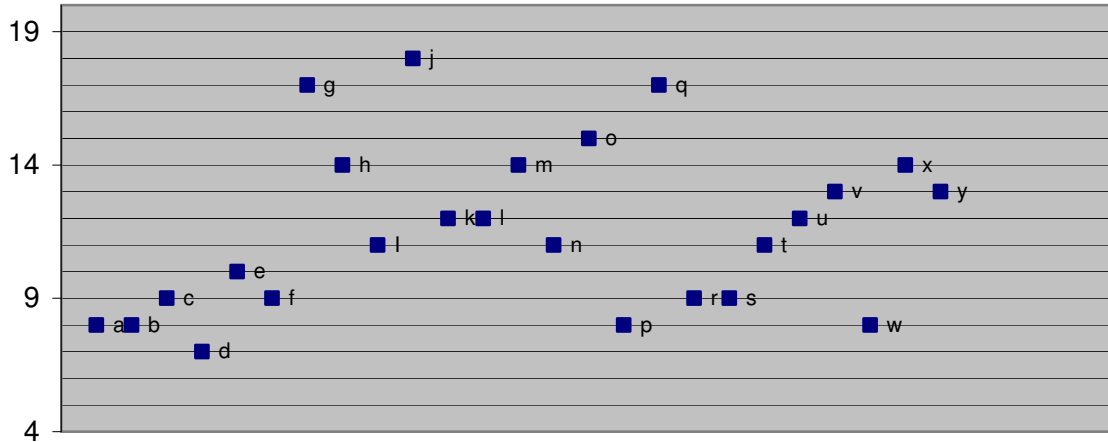
- n** Landslide
- o** Extended Power Outage
- p** Radiation Release
- q** Severe Wind Storm
- r** Terrorism, WMD; Biological, Chemical, Nuclear
- s** Transportation Accident: Aircraft
- t** Transportation Accident: Marine
- u** Transportation Accident: Motor Vehicle
- v** Tsunami
- w** Volcanic Ash Fall
- x** Wildfire
- y** Windstorm



# APPENDIX B

**Response to survey question 4:  
How concerned are you about the following hazards?**

## East Zone Residents Hazards Concerns (4 Responses)



**Hazards**

### SCORES

- 20 = Very concerned
- 16 = Somewhat concerned
- 12 = No opinion
- 8 = Not very concerned
- 4 = Not at all concerned

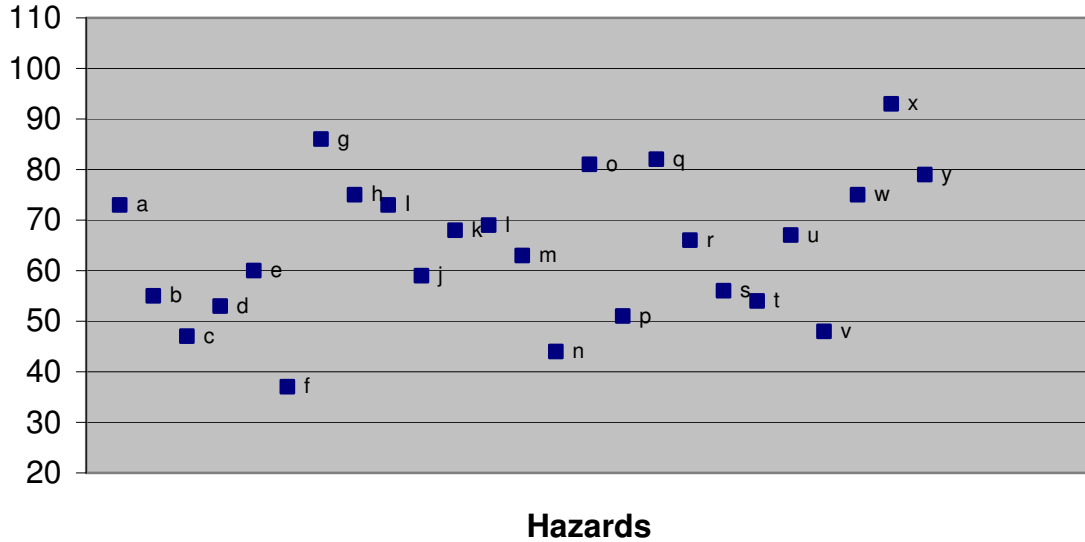
- a** Air pollution
- b** Attack
- c** Avalanche
- d** Civil Disturbance
- e** Coastal Erosion
- f** Dam Failure
- g** Earthquake
- h** Energy Emergency: Fuel/Resource Shortage
- i** Fire: Explosion/Structural
- j** Flood
- k** Hazardous Materials: Accident
- l** Hazardous Materials: Release
- m** Infrastructure Failure

- n** Landslide
- o** Extended Power Outage
- p** Radiation Release
- q** Severe Wind Storm
- r** Terrorism, WMD; Biological, Chemical, Nuclear
- s** Transportation Accident: Aircraft
- t** Transportation Accident: Marine
- u** Transportation Accident: Motor Vehicle
- v** Tsunami
- w** Volcanic Ash Fall
- x** Wildfire
- y** Windstorm



# APPENDIX B

## Central Zone Residents Hazard Concerns (21 responses)



SCORES	
105	= Very concerned
84	= Somewhat concerned
63	= No opinion
42	= Not very concerned
21	= Not at all concerned

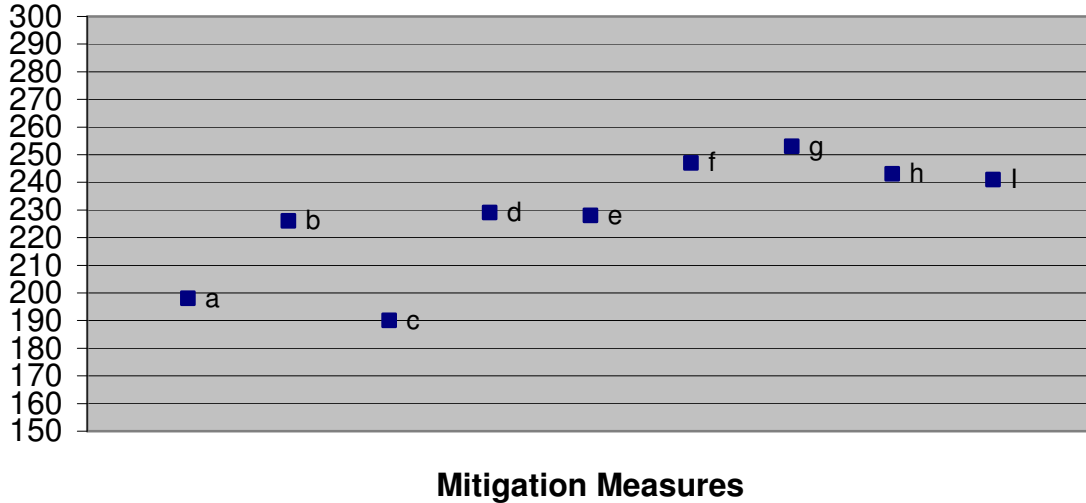
<b>a</b>	Air pollution
<b>b</b>	Attack
<b>c</b>	Avalanche
<b>d</b>	Civil Disturbance
<b>e</b>	Coastal Erosion
<b>f</b>	Dam Failure
<b>g</b>	Earthquake
<b>h</b>	Energy Emergency: Fuel/Resource Shortage
<b>i</b>	Fire: Explosion/Structural
<b>j</b>	Flood
<b>k</b>	Hazardous Materials: Accident
<b>l</b>	Hazardous Materials: Release
<b>m</b>	Infrastructure Failure

<b>n</b>	Landslide
<b>o</b>	Extended Power Outage
<b>p</b>	Radiation Release
<b>q</b>	Severe Wind Storm
<b>r</b>	Terrorism, WMD; Biological, Chemical, Nuclear
<b>s</b>	Transportation Accident: Aircraft
<b>t</b>	Transportation Accident: Marine
<b>u</b>	Transportation Accident: Motor Vehicle
<b>v</b>	Tsunami
<b>w</b>	Volcanic Ash Fall
<b>x</b>	Wildfire
<b>y</b>	Windstorm



## APPENDIX B

### KPB Resident Recommended Hazard Mitigation Measures (57 responses)



#### SCORES

- 285 = Strongly agree
- 228 = Agree
- 171 = No opinion
- 114 = Disagree
- 57 = Strongly disagree

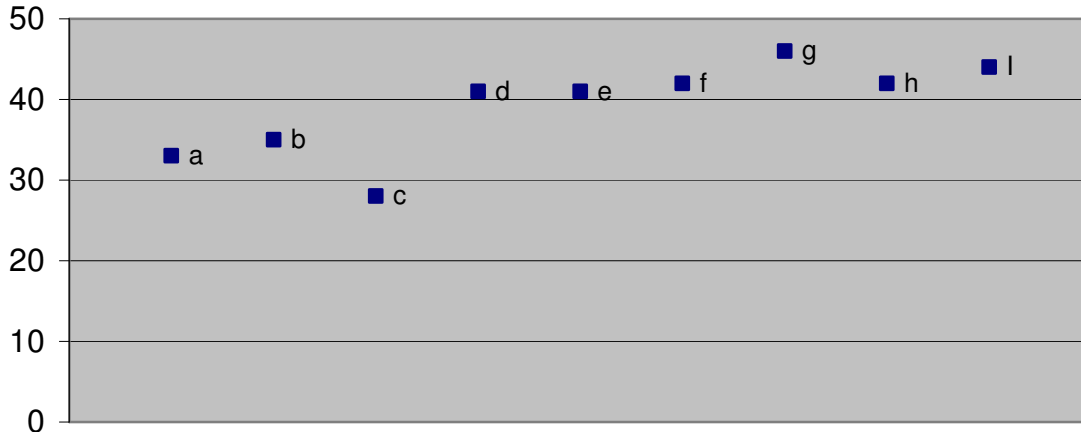
- a** Make hazard mitigation part of every land use proposal
- b** Restrict construction in areas with a high risk for natural hazards such as flooding or avalanches
- c** Building code changes
- d** Increase accuracy of floodplain mapping
- e** Increase accuracy of other hazard maps
- f** Encourage the creation of firebreaks
- g** Encourage FireWise building practices
- h** Clear spruce-bark beetle killed trees
- i** Improve hazard education



# APPENDIX B

**Response to survey question 6:  
In your opinion, what steps should the KPB take to reduce possible damage and loss of life from natural technological hazards?**

**North Zone Recommended Hazard Mitigation Measures  
(10 responses)**



**Mitigation Measures**

**SCORES**

- 50 = Strongly agree
- 40 = Agree
- 30 = No opinion
- 20 = Disagree
- 10 = Strongly disagree

- a** Make hazard mitigation part of every land use proposal
- b** Restrict construction in areas with a high risk for natural hazards such as flooding or avalanches
- c** Building code changes
- d** Increase accuracy of floodplain mapping
- e** Increase accuracy of other hazard maps
- f** Encourage the creation of firebreaks
- g** Encourage FireWise building practices
- h** Clear spruce-bark beetle killed trees
- i** Improve hazard education

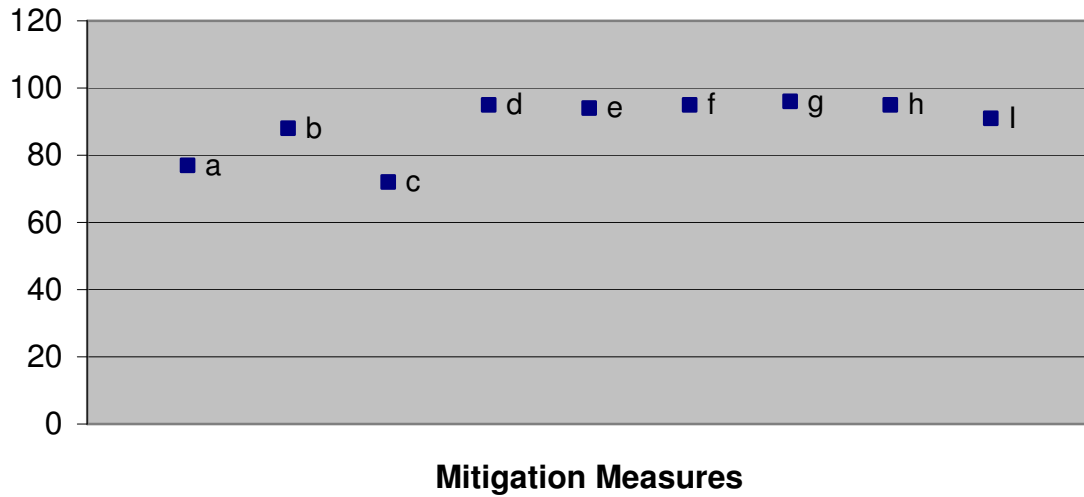


## APPENDIX B

### Response to survey question 6:

*In your opinion, what steps should the KPB take to reduce possible damage and loss of life from natural technological hazards?*

### South Zone Recommended Mitigation Measures (22 Responses)



#### SCORES

- 110 = Strongly agree
- 88 = Agree
- 66 = No opinion
- 44 = Disagree
- 22 = Strongly disagree

- a** Make hazard mitigation part of every land use proposal
- b** Restrict construction in areas with a high risk for natural hazards such as flooding or avalanches
- c** Building code changes
- d** Increase accuracy of floodplain mapping
- e** Increase accuracy of other hazard maps
- f** Encourage the creation of firebreaks
- g** Encourage FireWise building practices
- h** Clear spruce-bark beetle killed trees
- i** Improve hazard education

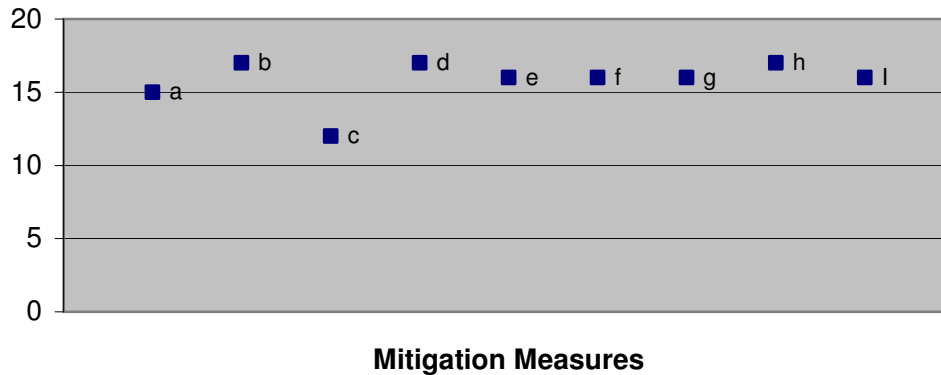


## APPENDIX B

### Response to survey question 6:

*In your opinion, what steps should the KPB take to reduce possible damage and loss of life from natural technological hazards?*

**East Zone Recommended Mitigation Measures  
(4 responses)**



#### SCORES

- 20 = Strongly agree
- 16 = Agree
- 12 = No opinion
- 8 = Disagree
- 4 = Strongly agree

- a** Make hazard mitigation part of every land use proposal
- b** Restrict construction in areas with a high risk for natural hazards such as flooding or avalanches
- c** Building code changes
- d** Increase accuracy of floodplain mapping
- e** Increase accuracy of other hazard maps
- f** Encourage the creation of firebreaks
- g** Encourage FireWise building practices
- h** Clear spruce-bark beetle killed trees
- i** Improve hazard education

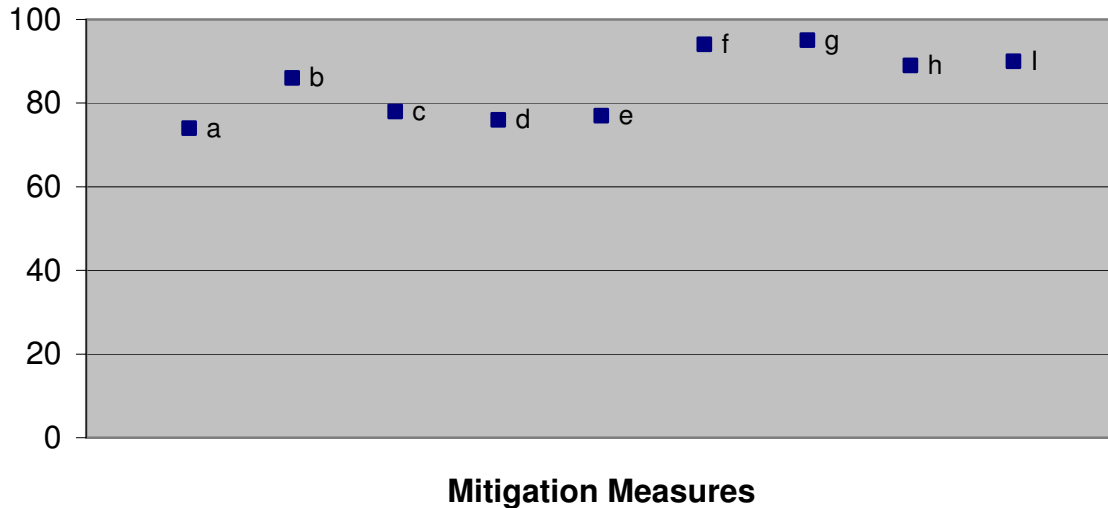


# APPENDIX B

## Response to survey question 6:

*In your opinion, what steps should the KPB take to reduce possible damage and loss of life from natural technological hazards?*

**Central Zone Recommended Mitigation Measures  
(21 Responses)**



SCORES	
105	= Strongly agree
84	= Agree
63	= No opinion
42	= Disagree
21	= Strongly disagree

- |          |  |
|----------|--|
| <b>a</b> | Make hazard mitigation part of every land use proposal   |
| <b>b</b> | Restrict construction in areas with a high risk for natural hazards such as flooding or avalanches |
| <b>c</b> | Building code changes  |
| <b>d</b> | Increase accuracy of floodplain mapping  |
| <b>e</b> | Increase accuracy of other hazard maps   |
| <b>f</b> | Encourage the creation of firebreaks   |
| <b>g</b> | Encourage FireWise building practices  |
| <b>h</b> | Clear spruce-bark beetle killed trees  |
| <b>i</b> | Improve hazard education   |