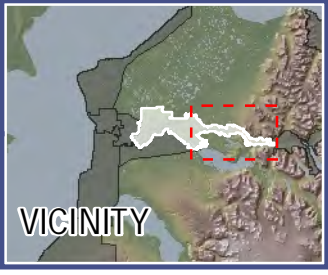
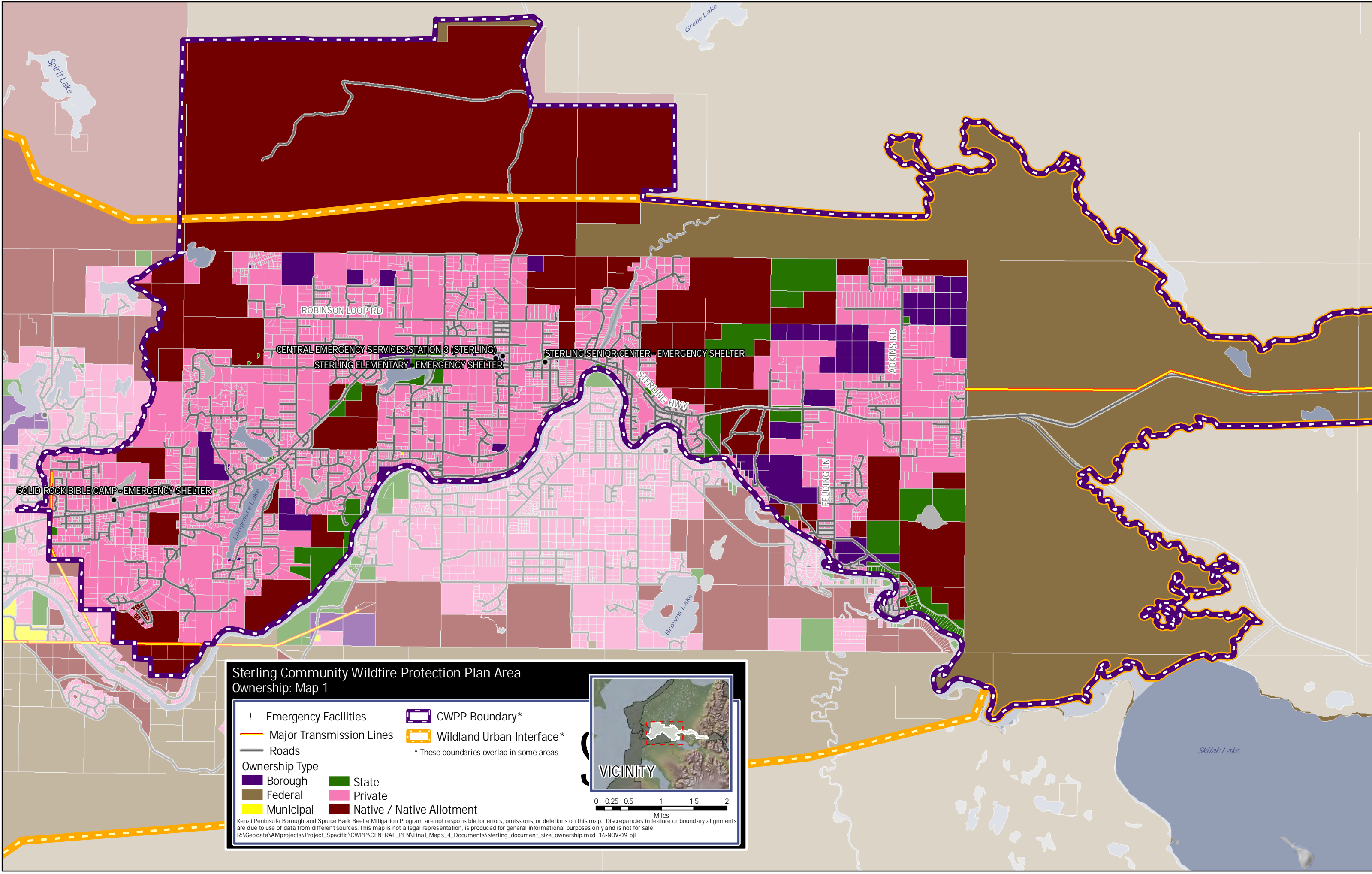


Sterling Community Wildfire Protection Plan Area
Hazard Rating, Map 2

- Community Wildfire Protection Plan Boundary
 - Spring Hazard Rating**
 - Water
 - No Hazard / No Data
 - Very Low
 - Low
 - Moderate
 - High
 - Extreme
 - Roads**
 -
 - Firestarts ***
 - Human-caused
 - Lightning-caused
- *Accurate to the nearest quarter section



Kenai Peninsula Borough and Spruce Bark Beetle Mitigation Program are not responsible for errors, omissions, or deletions on this map. Discrepancies in feature or boundary alignments are due to use of data from different sources. This map is not a legal representation, is produced for general informational purposes only and is not for sale.
R:\Geodata\AM\projects\Project_Specific\CVWPP\CENTRAL_PEN\Final_Maps_4_Documents\sterling_document_size_hazardMap2.mxd 09-JUL-08 bjl



Sterling Community Wildfire Protection Plan Area
Ownership: Map 1

Emergency Facilities	CWPP Boundary*
Major Transmission Lines	Wildland Urban Interface*
Roads	

* These boundaries overlap in some areas

Ownership Type

Borough	State
Federal	Private
Municipal	Native / Native Allotment

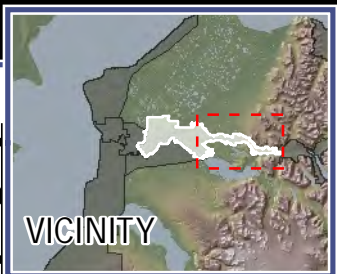
Kenai Peninsula Borough and Spruce Bark Beetle Mitigation Program are not responsible for errors, omissions, or deletions on this map. Discrepancies in feature or boundary alignments are due to use of data from different sources. This map is not a legal representation, is produced for general informational purposes only and is not for sale.
R:\Geodata\AM\projects\Project_Specific\CWPP\CENTRAL_PEN\Final_Maps_4_Documents\sterling_document_size_ownership.mxd 16-NOV-09 bjl

VICINITY

0 0.25 0.5 1 1.5 2
Miles

Sterling Community Wildfire Protection Plan Area
Ownership: Map 2

- | | |
|--------------------------|--|
| Emergency Facilities | CWPP Boundary* |
| Major Transmission Lines | Wildland Urban Interface* |
| Roads | * These boundaries overlap in some areas |
| Ownership Type | |
| Borough | State |
| Federal | Private |
| Municipal | Native / Native Allotment |



0 0.25 0.5 1 1.5 2
Miles

Kenai Peninsula Borough and Spruce Bark Beetle Mitigation Program are not responsible for errors, omissions, or deletions on this map. Discrepancies in feature or boundary alignments are due to use of data from different sources. This map is not a legal representation, is produced for general informational purposes only and is not for sale.
R:\Geodata\AM\projects\Project_Specific\CWPP\CENTRAL_PEN\Final_Maps_4_Documents\sterling_document_size_ownership.mxd 16-NOV-09 bjl

