




Legend

 CWPP Boundary

 Major Fires

 Parcels with Structures

Fuel Hazard (Spring Conditions)

 No Data

 Medium

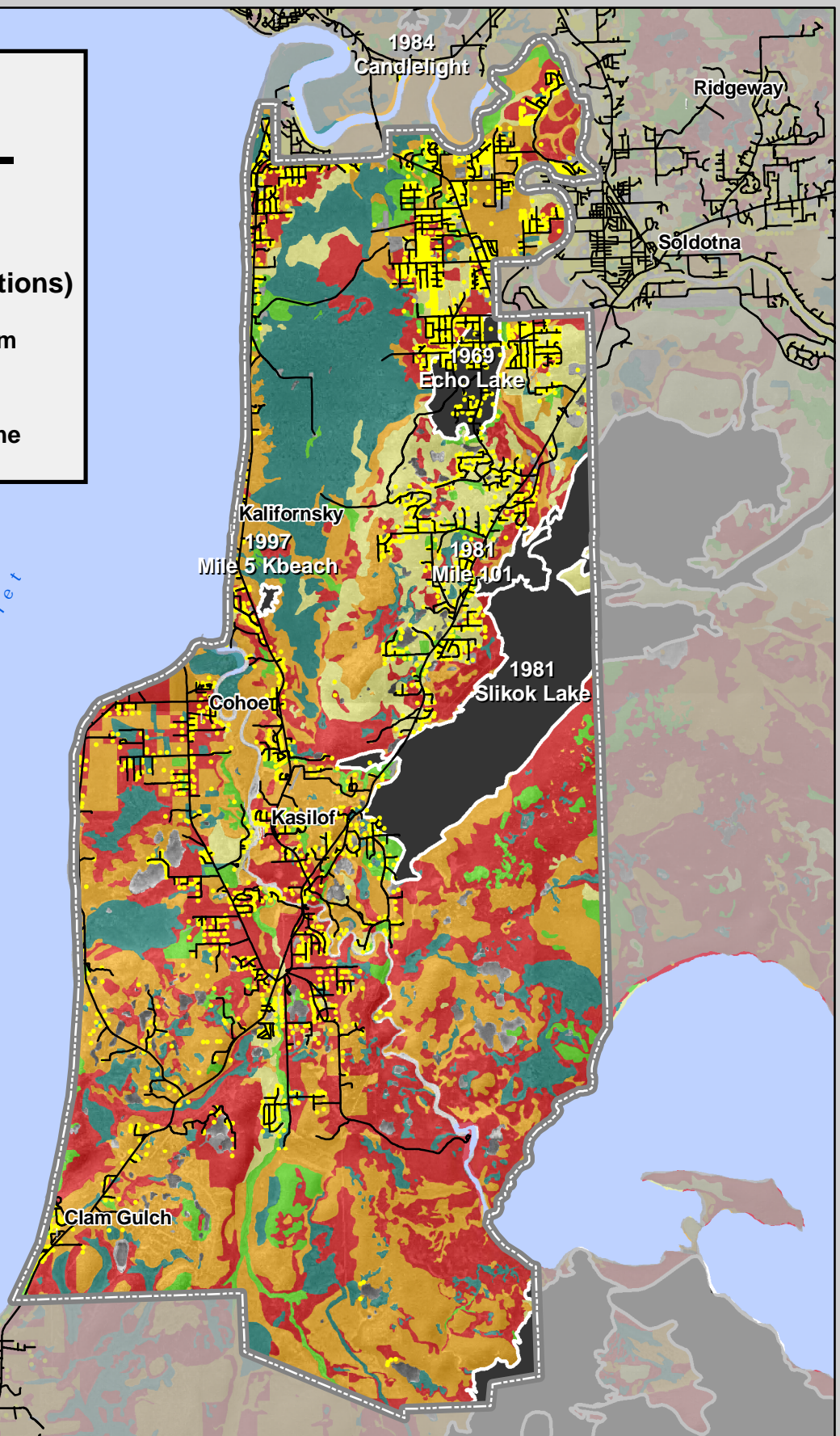
 Very Low

 High

 Low

 Extreme

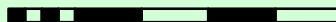
Cook Inlet



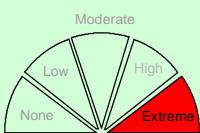
Fuel Hazard Class

KALIFORNISKY / KASILOF / COHOE / CLAM GULCH

0 0.5 1 2 3 4 5



Miles



Risk Rating

Kenai Peninsula Borough (KPB), Spruce Bark Beetle Mitigation Program (SBBMP) are not responsible for errors, omissions, or deletions on this map. Discrepancies in feature or boundary alignments are due to use of data from different sources. This map is not a legal representation, is produced for general informational purposes only and is not for sale.

M:\Projects\COMMUNITY_RISKHAZARD\KALIFORNISKY_CWPP_HAZARD.mxd By Bobbi Jo Lay & Marv Rude with support from Alaska Map Company
1 Feb 06

