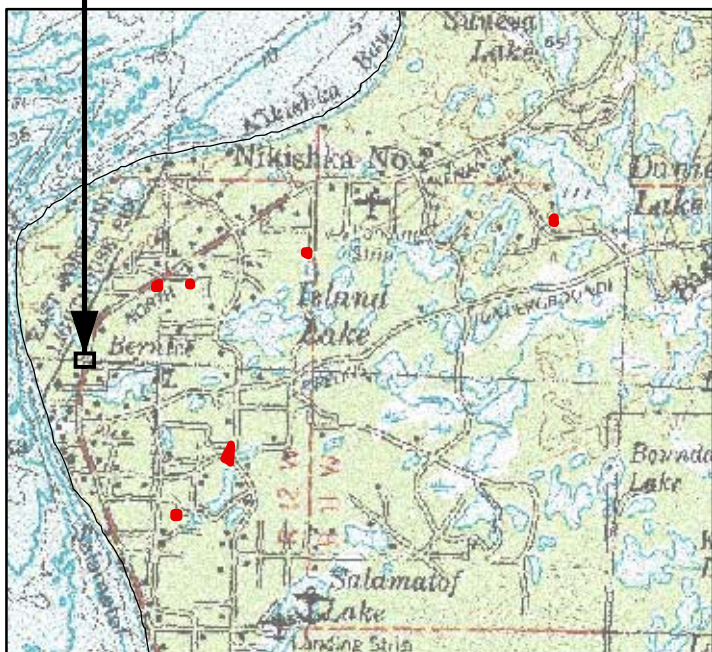
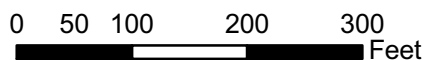


Nikiski

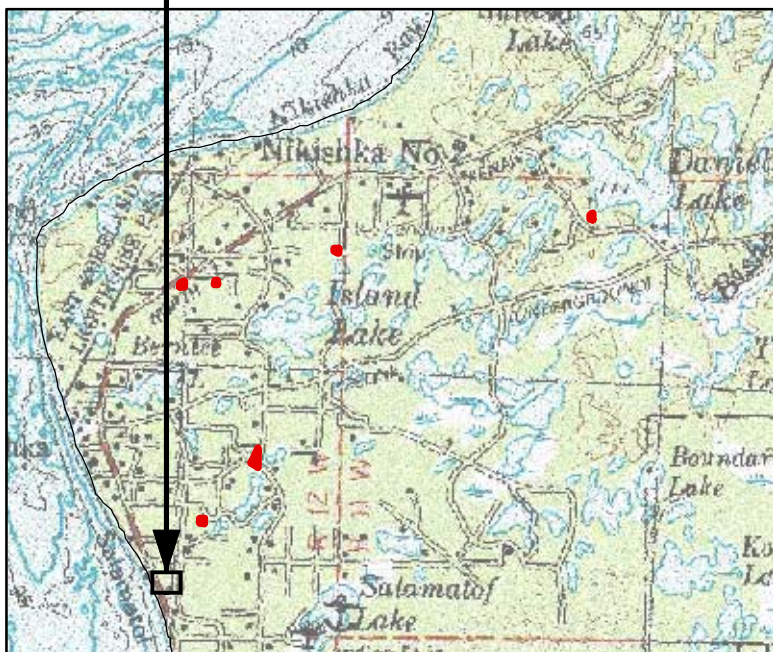
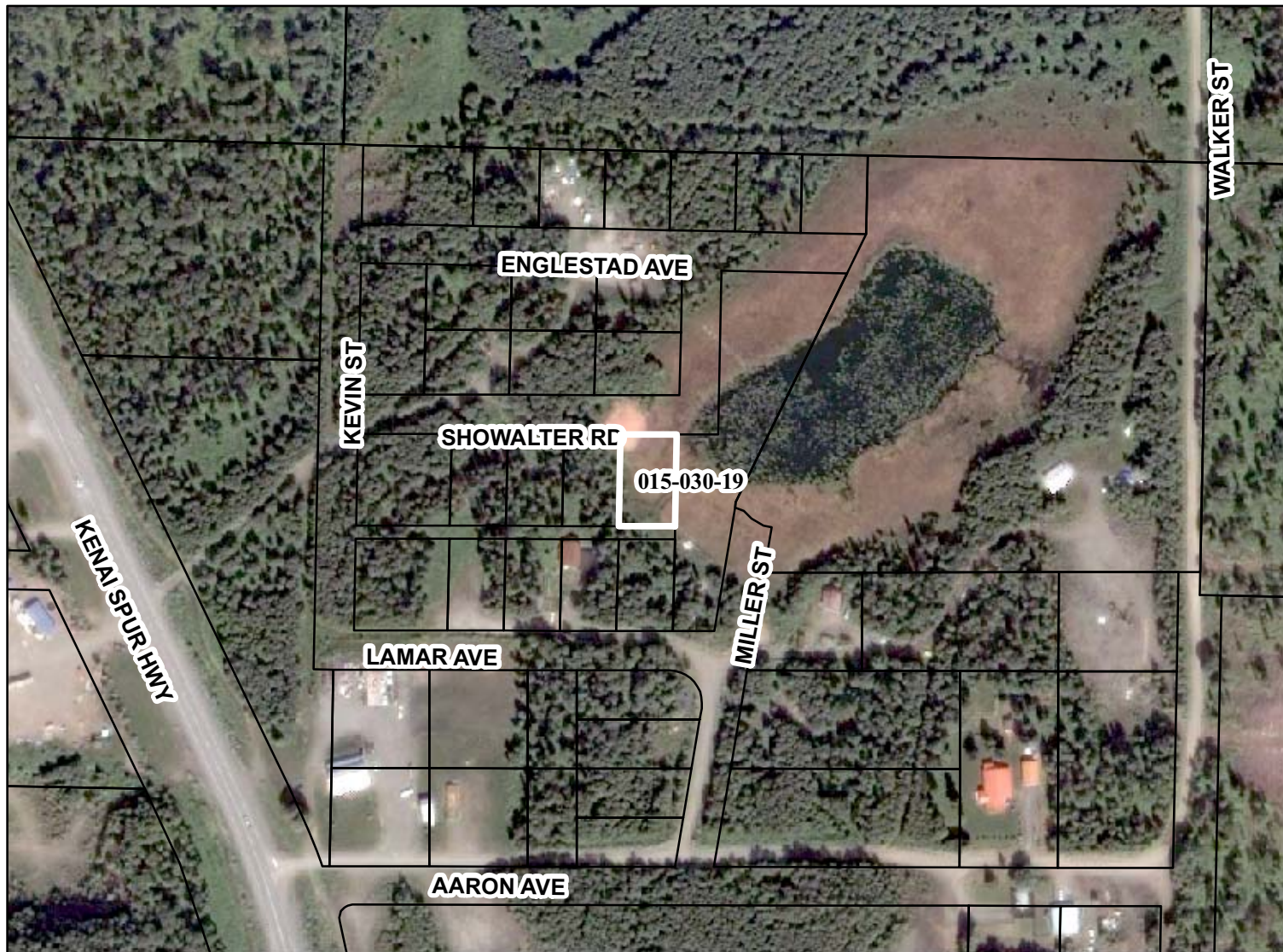
PARCEL NO. **014-060-24**



The information depicted hereon is for a graphical representation only of best available sources. The Kenai Peninsula Borough assumes no responsibility for any errors on this map.



Parcel No.	Acres	Minimum Bid
014-060-24	0.31	\$1,100



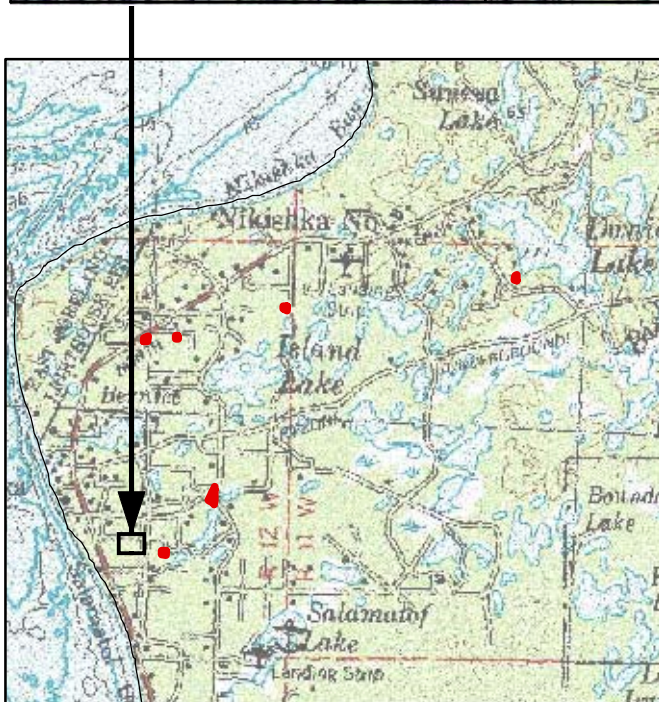
The information depicted hereon is for a graphical representation only of best available sources. The Kenai Peninsula Borough assumes no responsibility for any errors on this map.



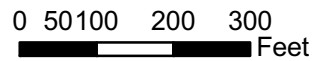
Parcel No.	Acres	Minimum Bid
015-030-19	0.28	\$600

Nikiski

PARCEL NO. **015-060-19**



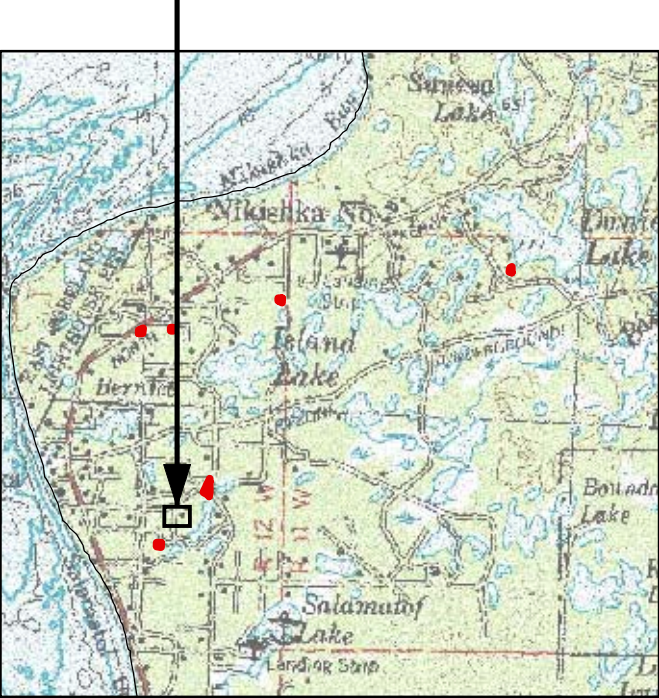
The information depicted hereon is for a graphical representation only of best available sources. The Kenai Peninsula Borough assumes no responsibility for any errors on this map.



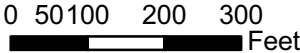
Parcel No.	Acres	Minimum Bid
015-060-19	0.3	\$3,400

Nikiski

PARCEL NO. **015-070-09**



The information depicted hereon is for a graphical representation only of best available sources. The Kenai Peninsula Borough assumes no responsibility for any errors on this map.



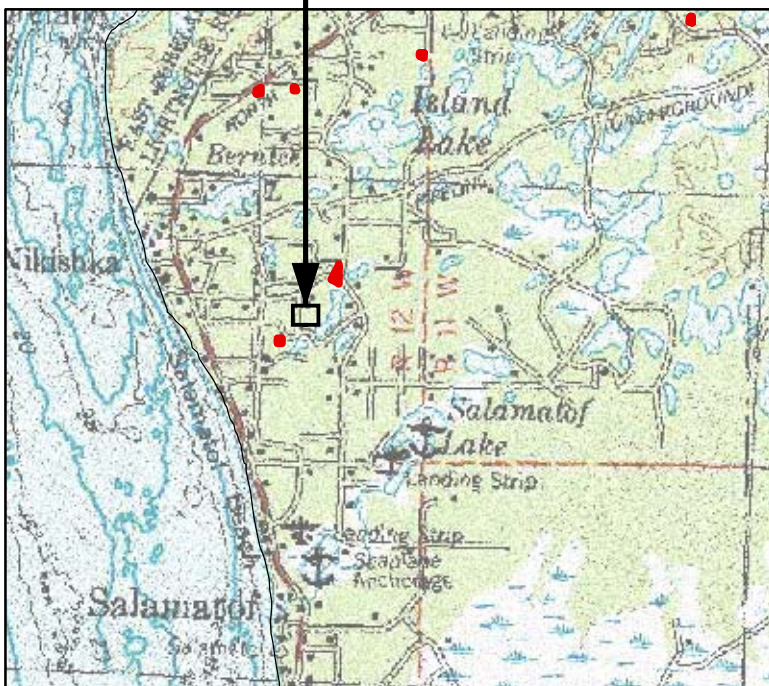
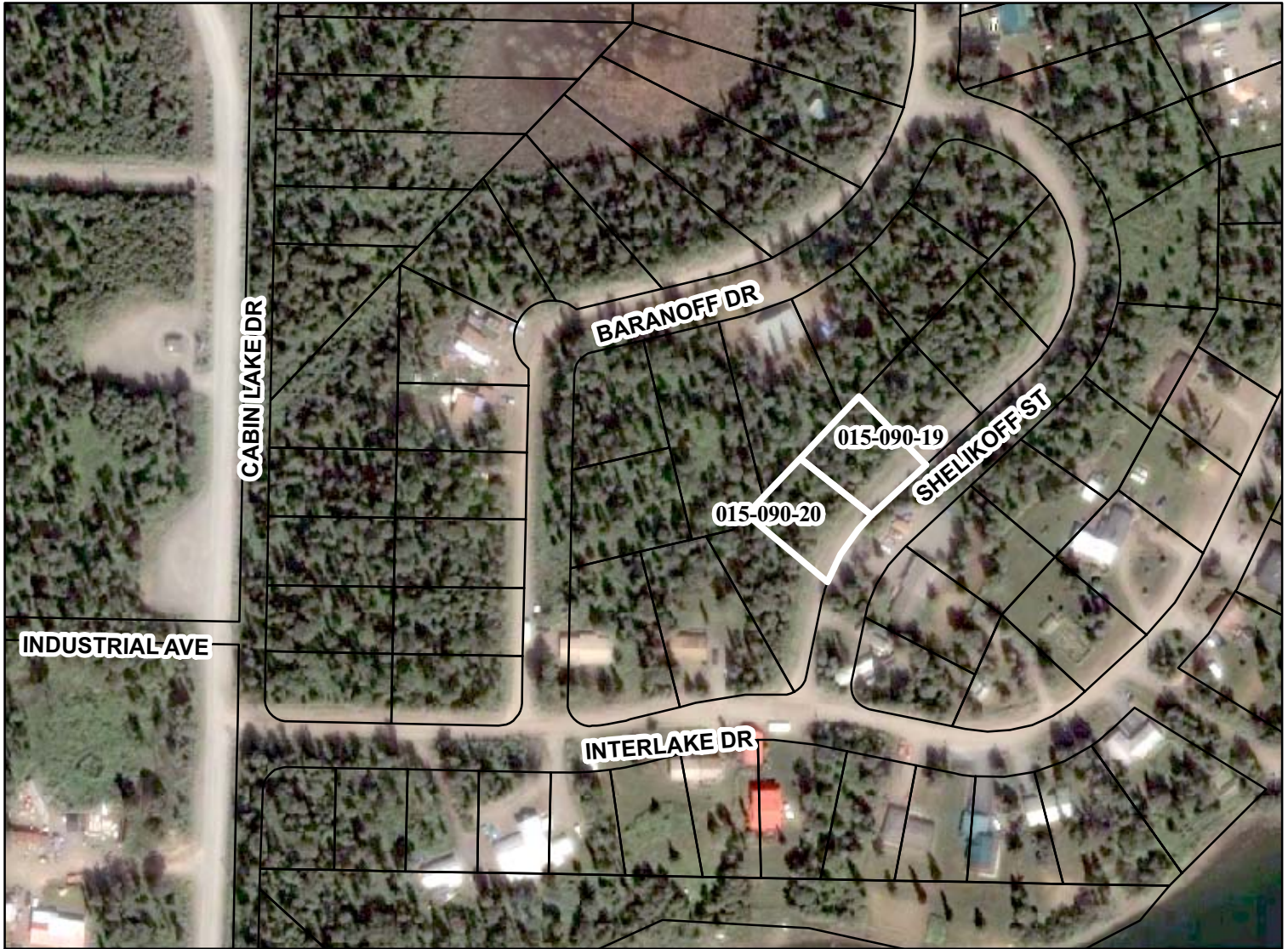
Parcel No.	Acres	Minimum B
015-070-09	0.62	\$4,000

Nikiski

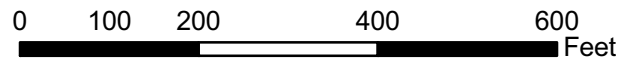
PARCEL NO.

015-090-19

015-090-20



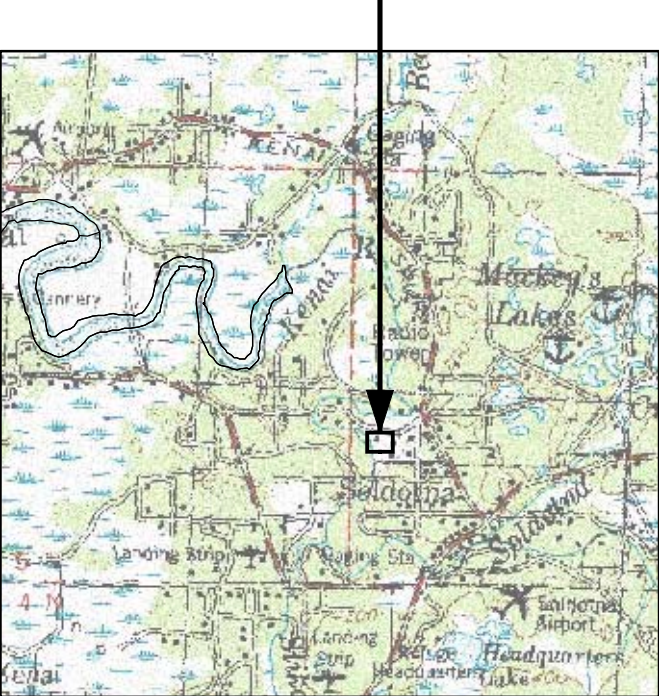
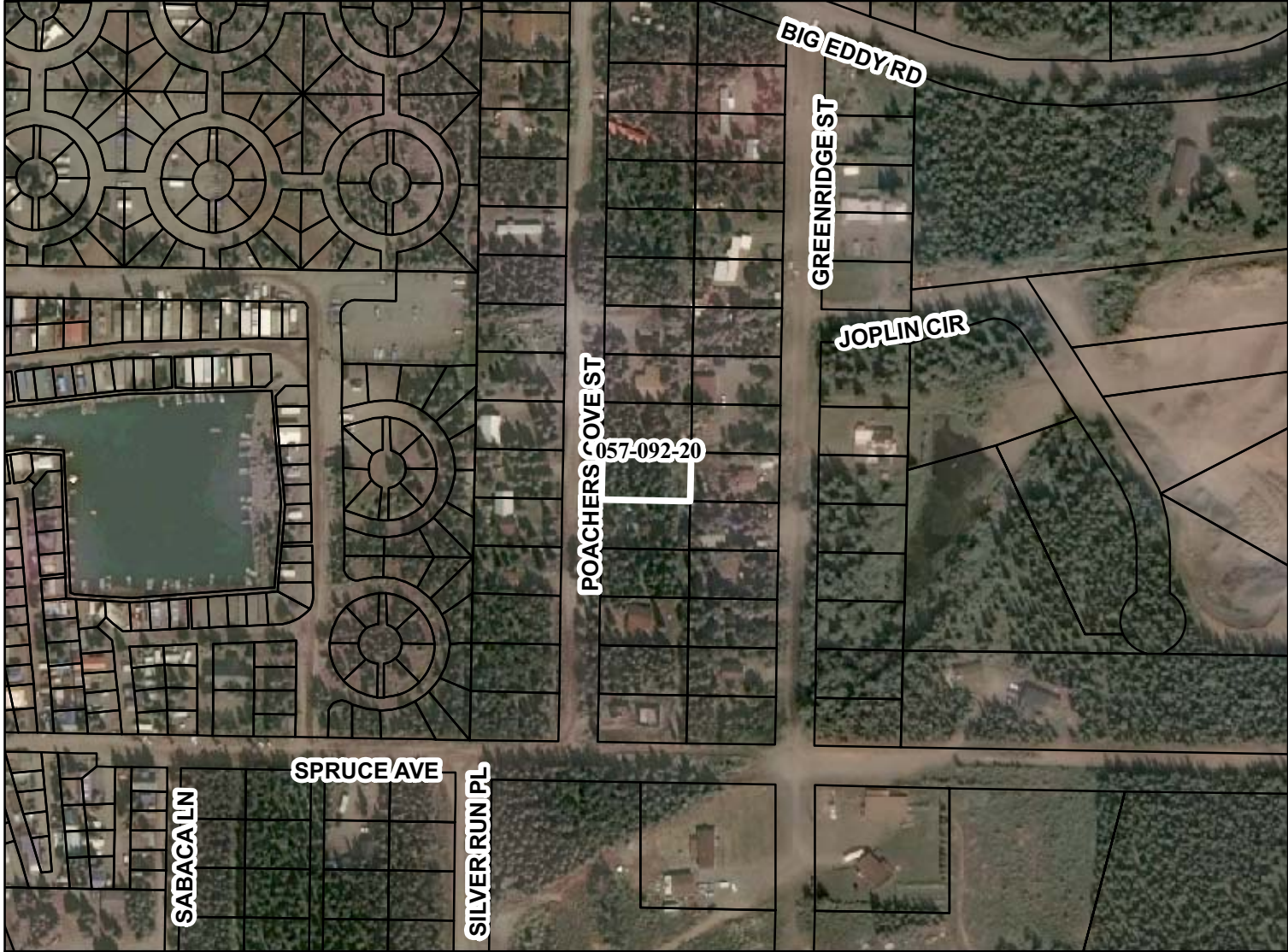
The information depicted hereon is for a graphical representation only of best available sources. The Kenai Peninsula Borough assumes no responsibility for any errors on this map.



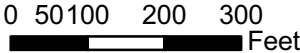
Parcel No.	Acres	Minimum Bid
015-090-19	0.3	\$3,400
015-090-20	0.3	\$3,400

Soldotna

PARCEL NO. **057-092-20**



The information depicted hereon is for a graphical representation only of best available sources. The Kenai Peninsula Borough assumes no responsibility for any errors on this map.



Parcel No.	Acres	Minimum Bid
057-092-20	0.23	\$7,400

Soldotna

PARCEL NO.

057-481-01
 057-481-02
 057-481-03
 057-481-27



The information depicted hereon is for a graphical representation only of best available sources. The Kenai Peninsula Borough assumes no responsibility for any errors on this map.

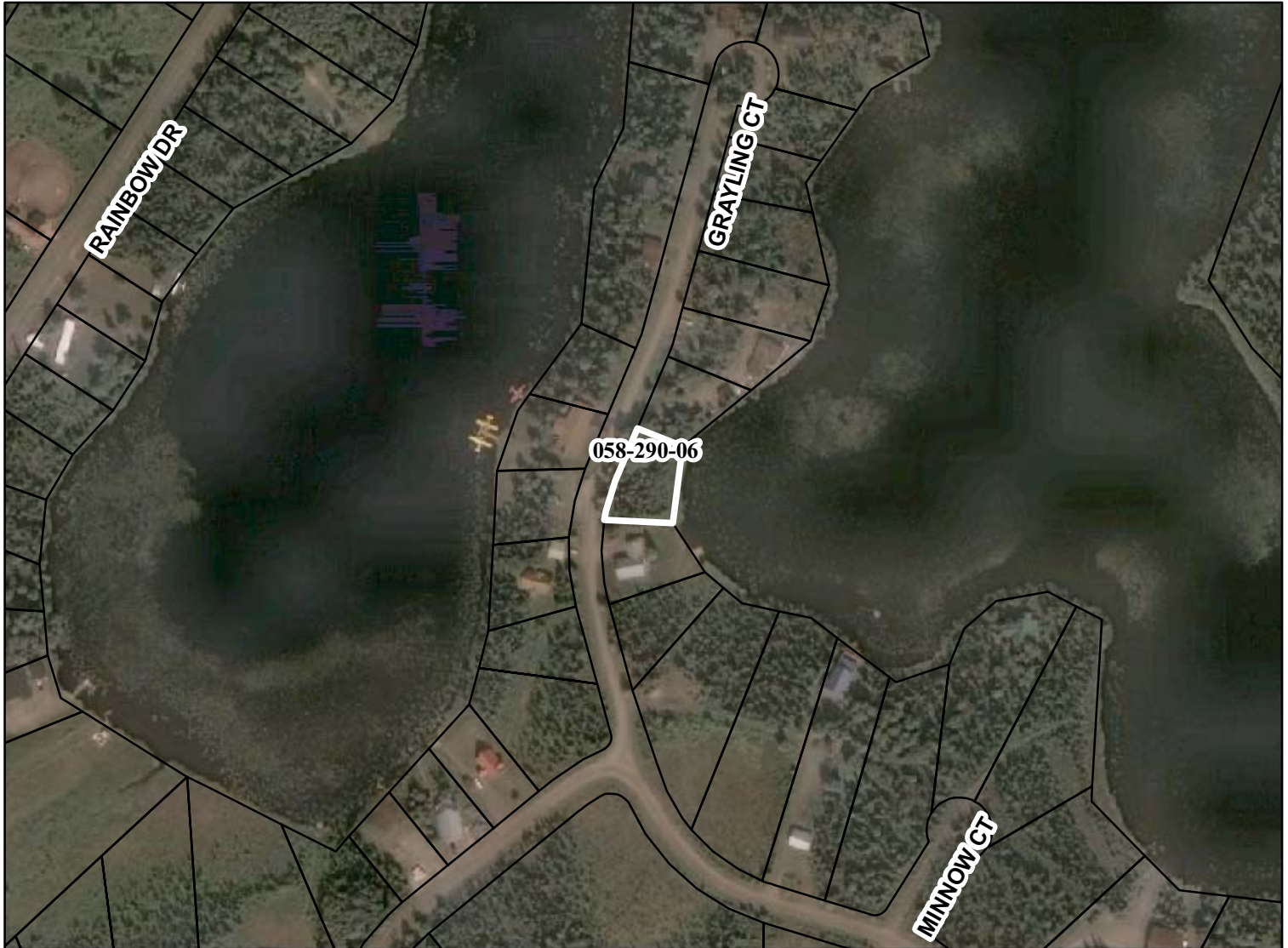
0 50 100 200 300 Feet



Parcel No.	Acres	Minimum Bid
057-481-01	0.17	\$6,400
057-481-02	0.17	\$6,400
057-481-03	0.17	\$6,400
057-481-27	0.17	\$6,400

Soldotna

PARCEL NO. **058-100-10**

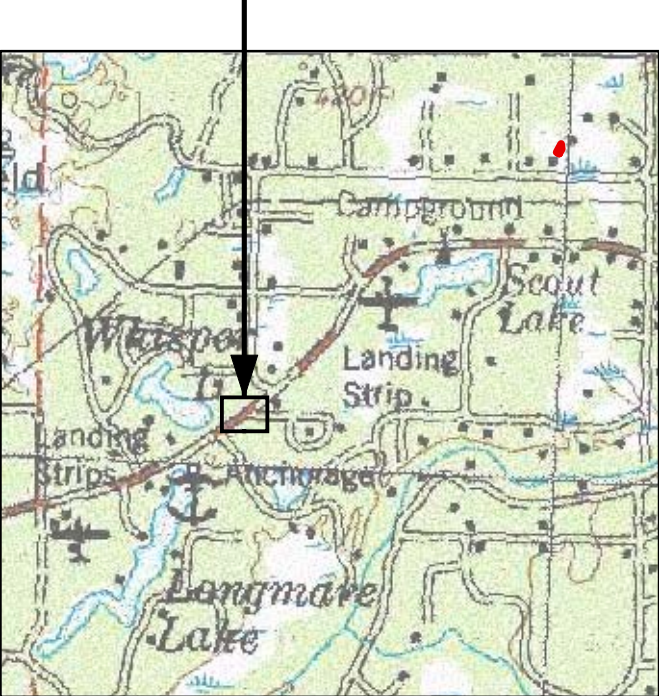
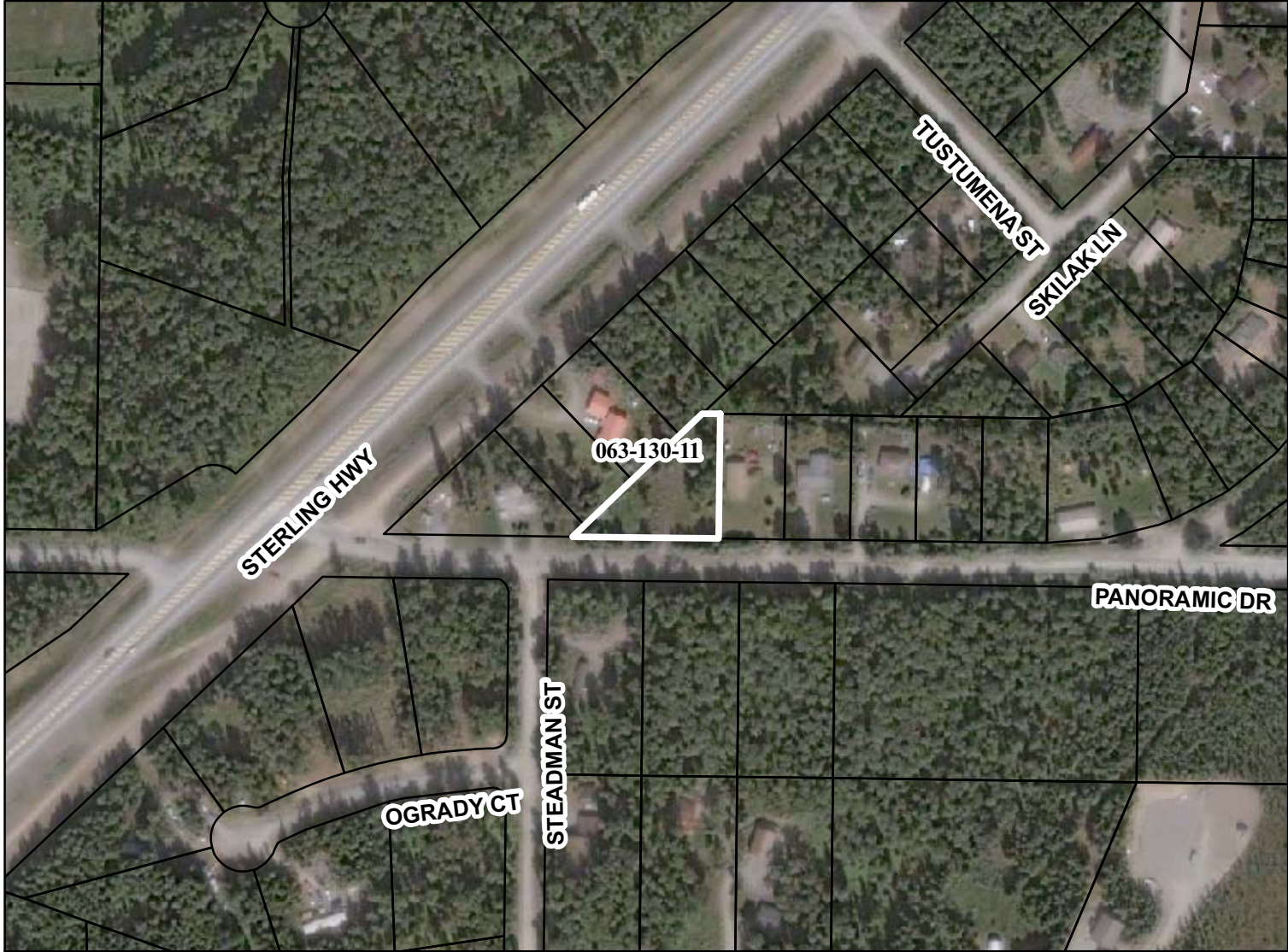


The information depicted hereon is for a graphical representation only of best available sources. The Kenai Peninsula Borough assumes no responsibility for any errors on this map.

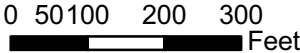
0 50 100 200 300 Feet



Parcel No.	Acres	Minimum Bid
058-100-10	0.3	\$25,200



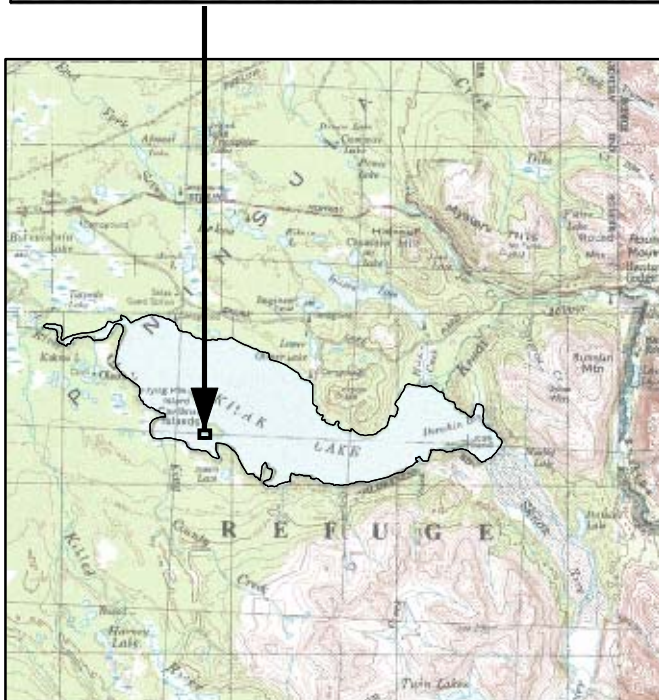
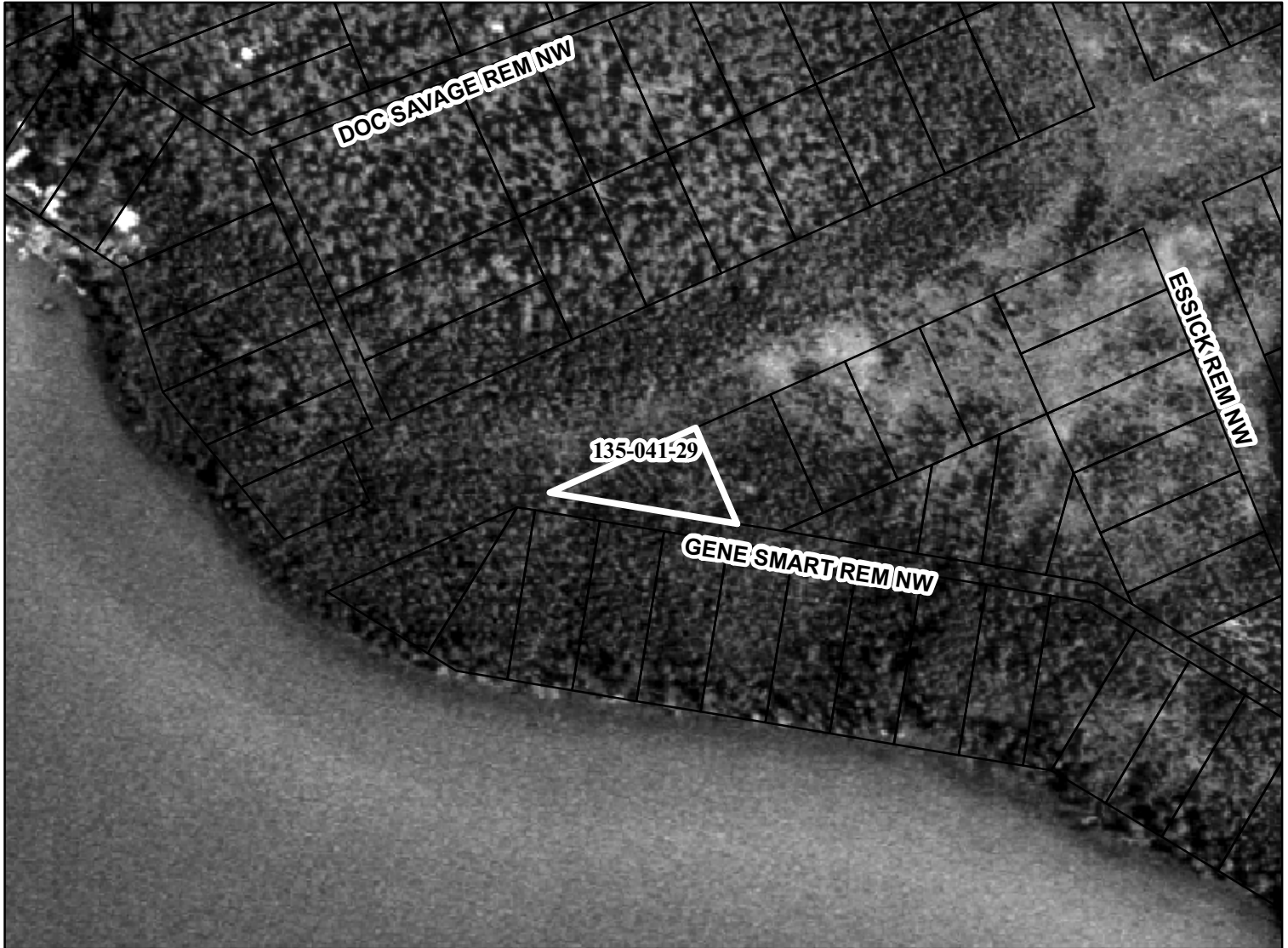
The information depicted hereon is for a graphical representation only of best available sources. The Kenai Peninsula Borough assumes no responsibility for any errors on this map.



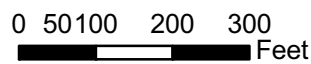
Parcel No.	Acres	Minimum Bid
063-130-11	0.58	\$23,400

Caribou Island

PARCEL NO. **135-041-29**



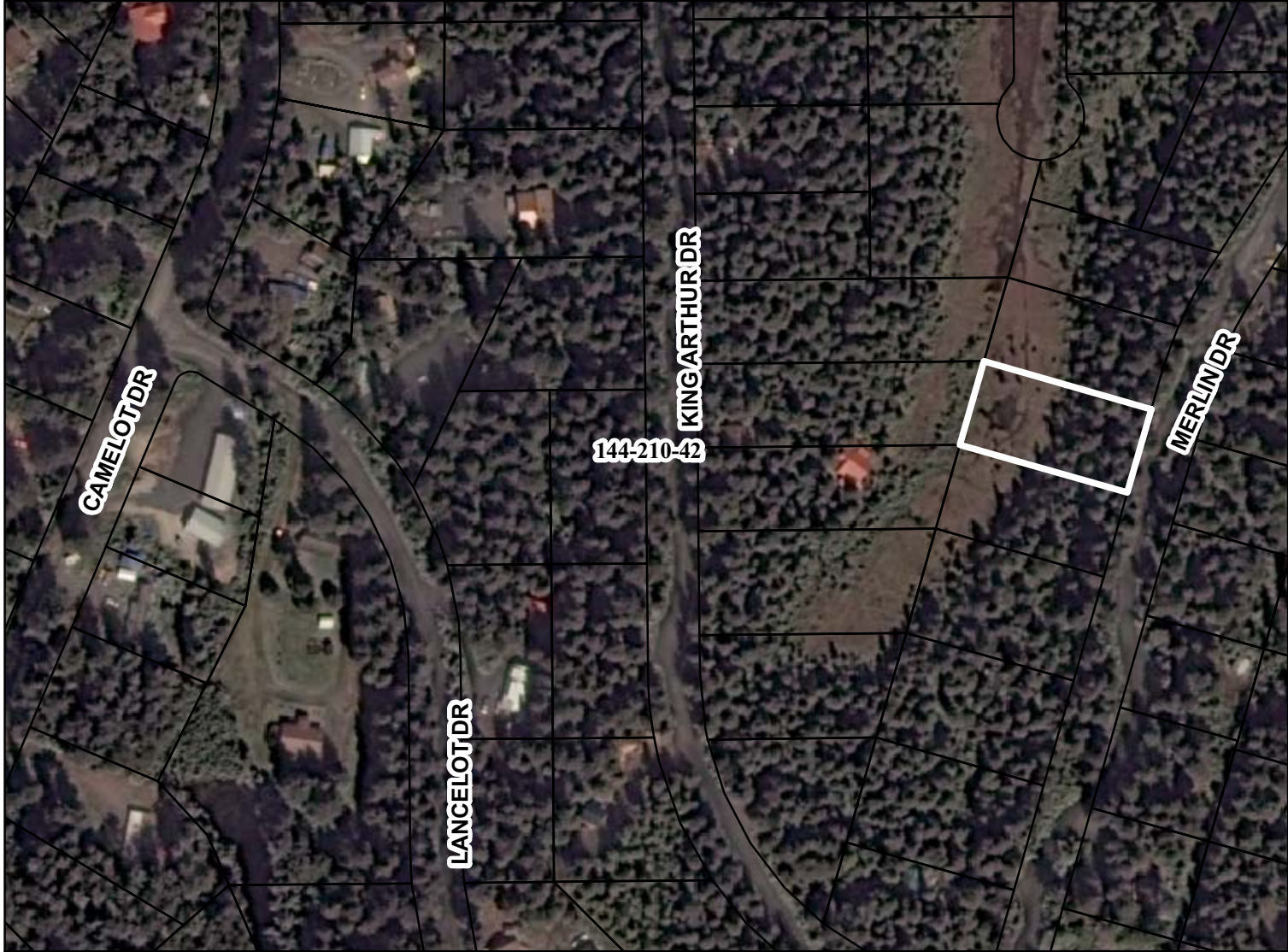
The information depicted hereon is for a graphical representation only of best available sources. The Kenai Peninsula Borough assumes no responsibility for any errors on this map.



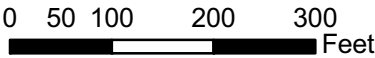
Parcel No.	Acres	Minimum Bid
135-041-29	0.45	\$2,900

Seward

PARCEL NO. **144-210-42**



The information depicted hereon is for a graphical representation only of best available sources. The Kenai Peninsula Borough assumes no responsibility for any errors on this map.



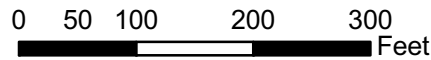
Parcel No.	Acres	Minimum Bid
144-210-42	0.46	\$7,100

Ninilchik

PARCEL NO. **157-075-03**



The information depicted hereon is for a graphical representation only of best available sources. The Kenai Peninsula Borough assumes no responsibility for any errors on this map.



Parcel No.	Acres	Minimum Bid
157-075-03	0.1	\$5,300