



KENAI PENINSULA BOROUGH

144 North Binkley Street • Soldotna, Alaska 99669-7520

Toll-free within the Borough: 1-800-478-4441

PHONE: (907) 262-4441 • **FAX:** (907) 262-1892

www.borough.kenai.ak.us

DAVE CAREY
BOROUGH MAYOR

MEMORANDUM

TO: Milli Martin, Assembly President
Members, Kenai Peninsula Borough Assembly

FROM: Paul Fischer, Assembly Member *P Fischer*

DATE: July 1, 2009

SUBJECT: Ordinance 2009-32, establishing the Central Peninsula Multi-Use Facility Service Area – Amendment Re District 7






Due to the comments I have received from the voters in Assembly District 7 indicating their opposition to the proposed multi-use facility, this is to advise the assembly that I intend to make a motion during the July 7, 2009, assembly meeting to change the boundaries of the proposed service area to exclude District 7. This is the district from which I am elected to office, and residents of that district have indicated to me their opposition to the additional taxes this would cost and to governmental involvement in developing the facility.

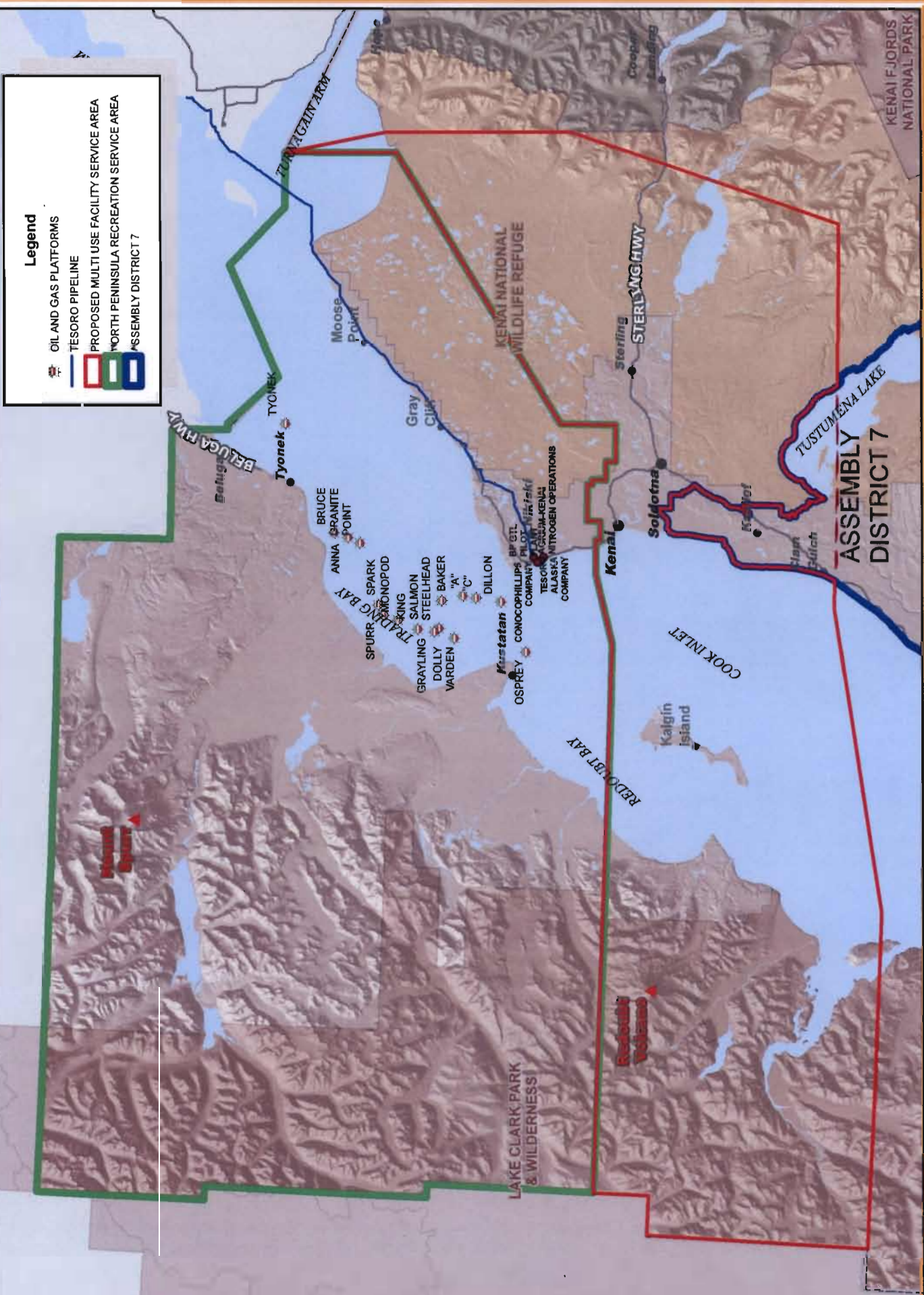
Attached is a map prepared by the GIS department that shows an overlay of District 7 and the proposed service area to help the assembly and public visualize the difference. In consideration of Gary Superman's intended proposal to remove the North Peninsula Recreation Service Area, the map also shows the proposed service area with both the NPRSA and District 7 removed. The portion of Assembly District 7 that would be removed from the proposed service area is above the dotted red line crossing Tustumena Lake. To be clear, my proposal will only include removing the shown portion of District 7.

The taxable assessed value of real property, AS 43.56 oil property, and personal property in the entire proposed service area is \$4,138,736,817. As soon as possible before the meeting on July 7, 2009, the assembly will be given the assessed values of the same types of property in the affected portion of Assembly District 7 and the resulting taxable assessed value of the same types of property in the proposed multi-use facility service area excluding Assembly District 7. Also, the specific legal description will be provided.

Your consideration of this amendment would be appreciated.

Legend

-  OIL AND GAS PLATFORMS
-  TESORO PIPELINE
-  PROPOSED MULTI USE FACILITY SERVICE AREA
-  NORTH PENINSULA RECREATION SERVICE AREA
-  ASSEMBLY DISTRICT 7



Printed on July 1, 2009

The information depicted herein is to a graphical representation only of best available sources. The Kenai Peninsula Borough assumes no responsibility for any errors on this map.

