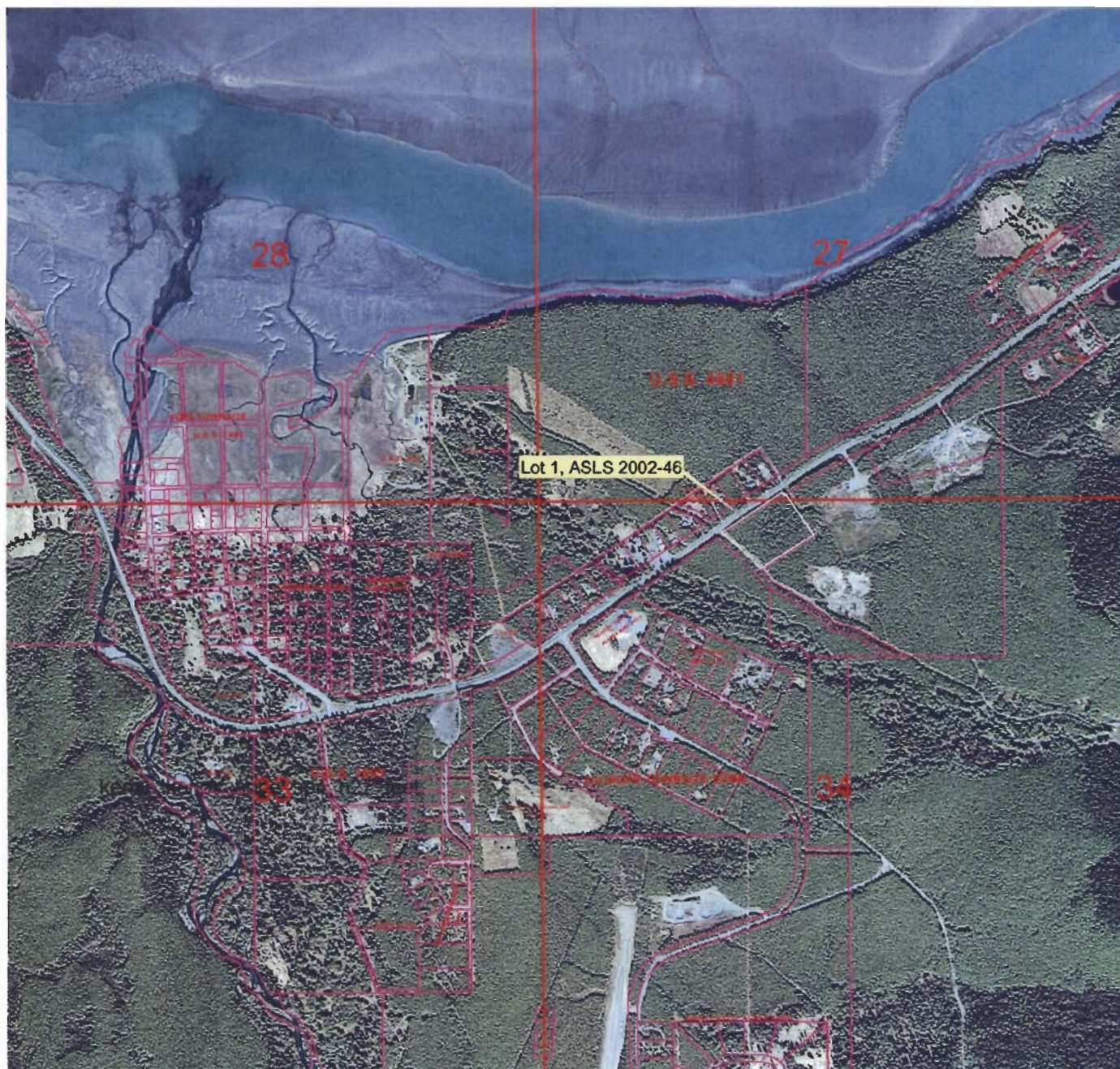


Hope/Sunrise Volunteer Fire Department
Proposed Lease
Lot 1, ASLS 2002-46
Assessor Parcel No. 035-290-19



0 0.2 0.4 0.8 Miles



The information depicted hereon is for a graphical representation only of best available sources. The Kenai Peninsula Borough assumes no responsibility for any errors on this map.